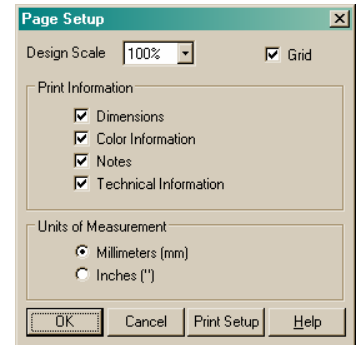


## Printing Templates in the Pfaff 3D Embroidery Software




Instructions © by Jan Smith (2006)

<http://www.freewebs.com/compusewithjan/>

1. Open **3D Embroidery**.
2. Click on **File/Page Setup**, and set the *Design Scale to 100%* and make sure you have a checkmark in the *Grid*. If you want to print out the design information, just make sure checkmarks are in the areas you want to print, like the dimensions, color chart information, notes that you may have made to a design and technical information.
3. Keep in mind, that if your design is for the large hoop you will be printing more than one page to get this information. If you **ONLY** want to print your template in “Actual Size” then you can leave this information out on your Page Setup **OR** just set your printer options for Page 1 to Page 1. The most important thing is to have your *Design Scale at 100% for Actual size template and the Grid on for alignment cross hatch marks*.
4. If you **ONLY** want the information about your design then you can change the Design Scale to a smaller number to print a “picture” of the design (not in actual size) and the other information just to keep for your record.



### Bring your design into the 3D Embroidery Artist Work Area

1. If you know the size of your design, then click on the Preference Icon  and select your hoop size. If you don't know the size of your design you can always select the hoop after the design is in the work area.
2. Click (left mouse) on the Blue Camera  and scroll to the area where you have stored your designs. Click *one time* on the design you want to use.
3. Make sure your design is centered and then click on the Combine Icon  (this will allow you to see a Print Preview of the design).
4. Click on **File/Print Preview** and you will see how your template will look when it prints out (see diagram below. Click on **Print** and a small window will be displayed where you can set your actual printer options (under Properties for my Epson—Vellum would be Inkjet Transparencies). If you only have one page to print, then just click OK (or whatever your printer options are). Again, if your design is large and you **DO NOT** want the Color information, etc., then at this window just click in the area where you can select printing for Page 1 to Page 1 (the first page is the template and the next page is for the design information).

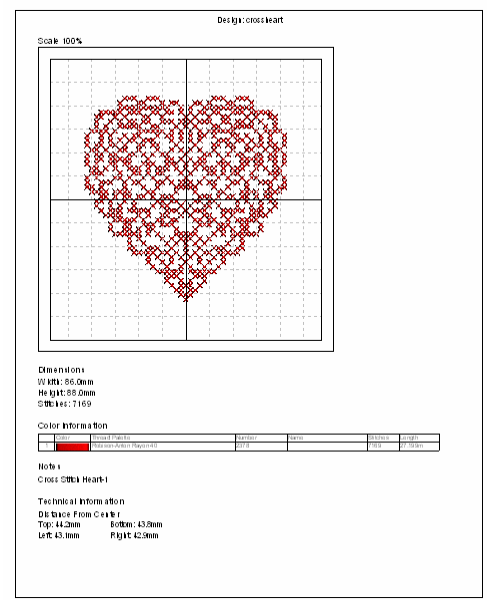
### Tips for Printing Templates

I personally do not like to print all the colors of a design when I am printing my templates. It uses up too much (expensive) color ink. I just change all the colors of the design to one *gray* color and use this for my template. Make sure you don't save the design with the color changes.

If I am going to print a lot of templates for the same design, I will *rename the design file* when resaving the design—something like Print Cross Stitch Heart-1. It won't matter how many characters you use as you won't be sending this file to the machine. I also save my design files for printing with a DST extension (personal choice). The computer will save any size with this extension.

Another tip; if you need to use your template for precise positioning, you might consider purchasing a *transparent* printer paper such as Vellum. You can get this in large quantities at Kelley Paper Company, and other computer stores probably carry the same thing in smaller quantities.

Place your template on your fabric or garment in the area you want your design; make *cross hatch* marks with water soluble pen on the vertical and horizontal lines; make sure your needle is lined up to the center of these marks when you get ready to embroider. Perfect Placement!



Print Preview