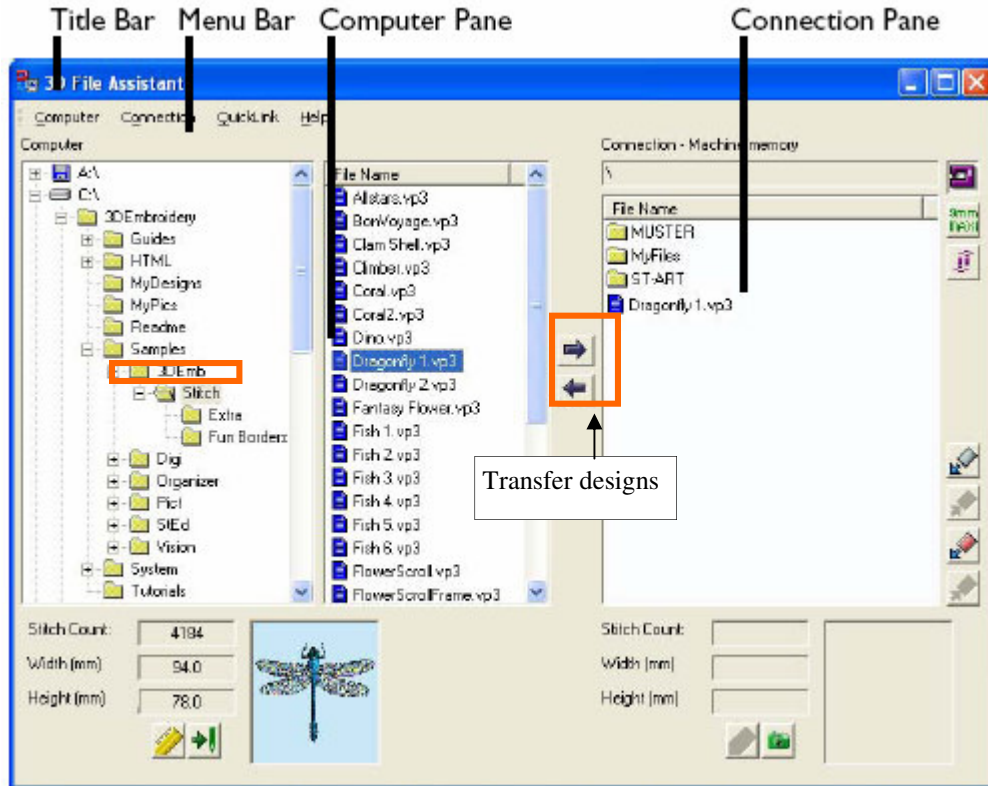


File Assistant
Transfer Designs TO Computer FROM Sewing Machine
Instructions by Jan Smith
 jan@tstonramp.com



Quick Instruction (Cheat Sheet)

1. Select COMPUTER destination (see explanation on right side of this page).
2. Select sewing machine, or Stitch Artist or Card *icon* in Connection Pane (wherever your designs are located).
3. Click on design(s) and click on **LEFT ARROW** to transfer design(s) to computer (this does not remove the designs from the machine—to remove, you need to delete them).

Read the PDF Reference Guides that came with your software for more information and information on the Smart Card Station.

Send To Computer

Use Send To Computer to transfer single, multiple or all embroidery or stitch files from the Machine Memory to the computer.

Shortcuts

Icon: 

Keys: Alt, O, S

Connection pane, Right-click menu

How To Use



1. Browse to the desired folder in the Computer pane where you wish to store the file.
2. Select the Machine Memory icon, or click the ST-ART Folder icon to go directly to the ST-ART folder or click the Card In Machine icon, to select the card in the machine.
3. In the Connection pane, select the file you wish to transfer. For multiple files, hold down the Shift key to select consecutive files and/or use the Ctrl key to select multiple individual files. For all files, right-click in the File Name list and click **Select All Files** from the menu that appears. Selected files will be highlighted in blue.
4. Right-click on a selected file name and select **Send To Computer** from the shortcut menu (or click on the Send To Computer icon).
5. The file selection will be transferred to the computer and they will appear in the File Name list. Files are saved on the computer in the file format selected in 3D Configure. If .vp3 format is selected, the thread colors are selected according to the Import Thread Range chosen in 3D Configure.